


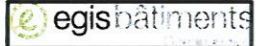



Lycée Antoine ROUSSIN (travaux de réhabilitation)
 Mise en Conformité Accessibilité / Sécurité incendie
 COMMUNE DE SAINT-LOUIS
 DEPARTEMENT DE LA REUNION

MAITRE D'OUVRAGE	Conseil Régional de la Réunion 	Hôtel de Région PIERRE LAGOURGUE AVENUE RENE CASSIN MOUFIA_BP 7190 97719 SAINT-DENIS MESSAG CEDEX 9	TEL :02 62 48.70.00 FAX :02 62 48.70.71
Mandataire MAITRE D'OUVRAGE	SPLA Maraina	38 rue Colbert 97460 - Saint Paul	TEL :02 62 91.91.60 FAX :02 62 91.91.69
MAITRE D'OEUVRE	EURL D'ARCHITECTURE FIANU C. 	14 bis chemin Luspot, Ligne Paradis 97410 Saint-Pierre	TEL :02 62 25.38.62 FAX :02 62 25.63.49
BET STRUCTURES	 egis bâtiments	159b, rue Juliette Dodu - BP 45 97461 Saint-Denis Cedex	TEL :02 62 21 44 21 FAX :02 62 21 84 71
BET VRD / BASSE TENSION	 egis bâtiments		
BET FLUIDES	 egis bâtiments		
C.S.P.S	APAVE	10 Rue Adolphe ramassamy 97490 SAINTE-CLOTILDE	TEL :02 62 29.28.81 FAX :02 62 29.56.93
CONTROLEUR TECHNIQUE	APAVE	10 Rue Adolphe ramassamy 97490 SAINTE-CLOTILDE	TEL :02 62 29.28.81 FAX :02 62 29.56.93
CUISINISTE	CARTE LIBRE 	51 chemin de l'école de bois de nèfles 97426 TROIS BASSINS	GSM :02 92 66.82.04 FAX :02 62 57.36.07

A.P.D

ECH:1/100°

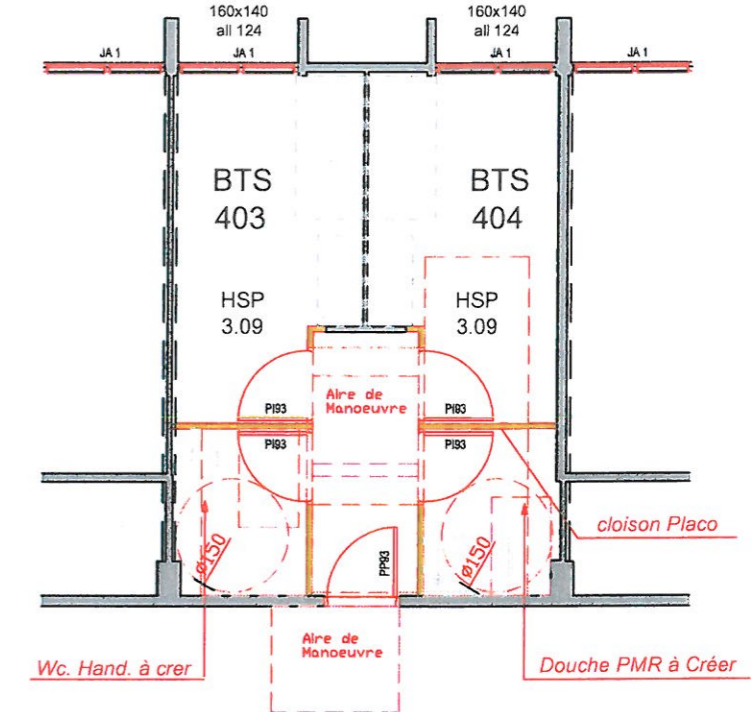
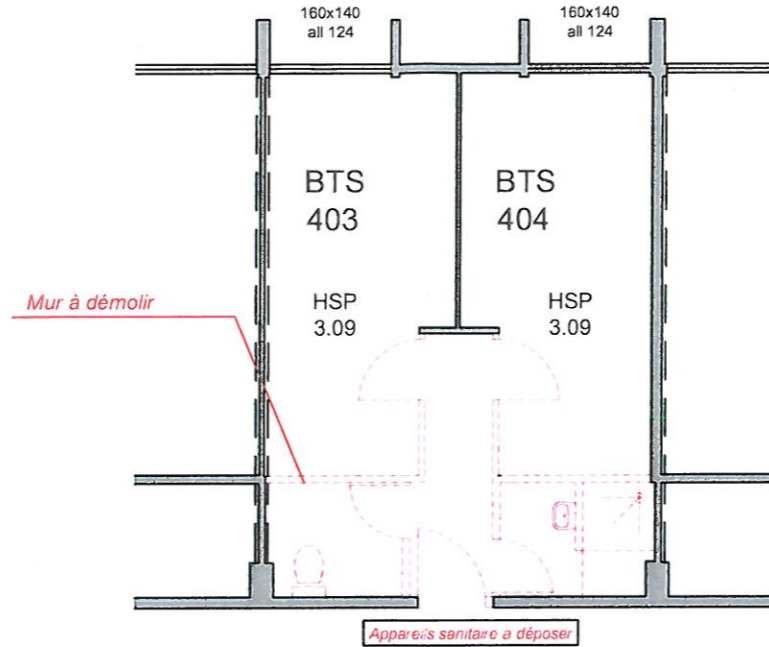
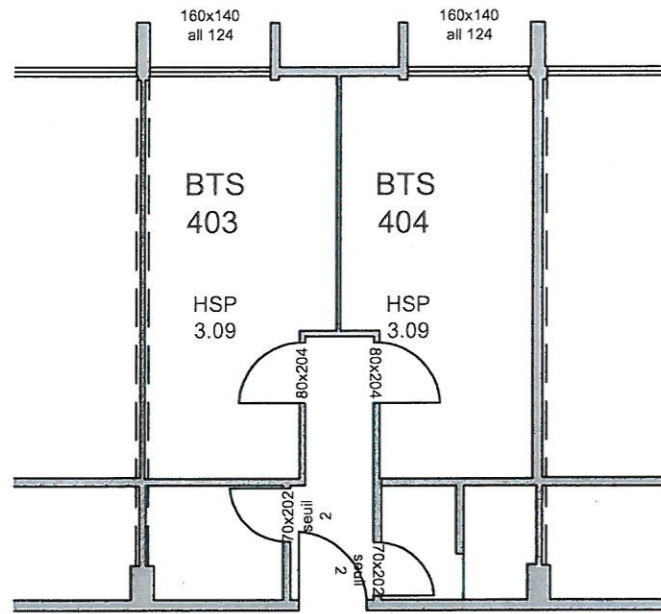
Détails

DATE : Août. 2014

MODIFICATIONS	INDICE	DATE

Plan de Principe Chambre BTS PMR

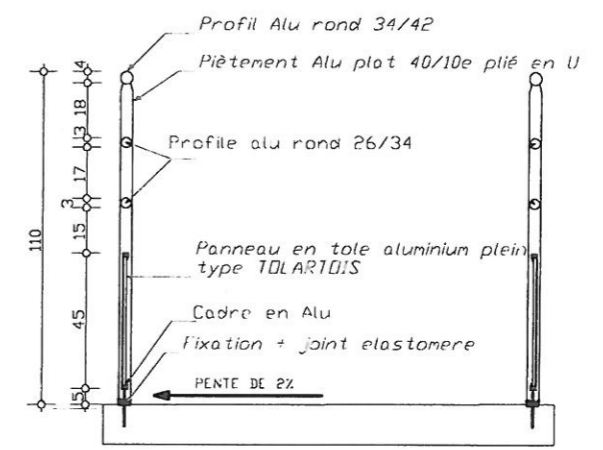
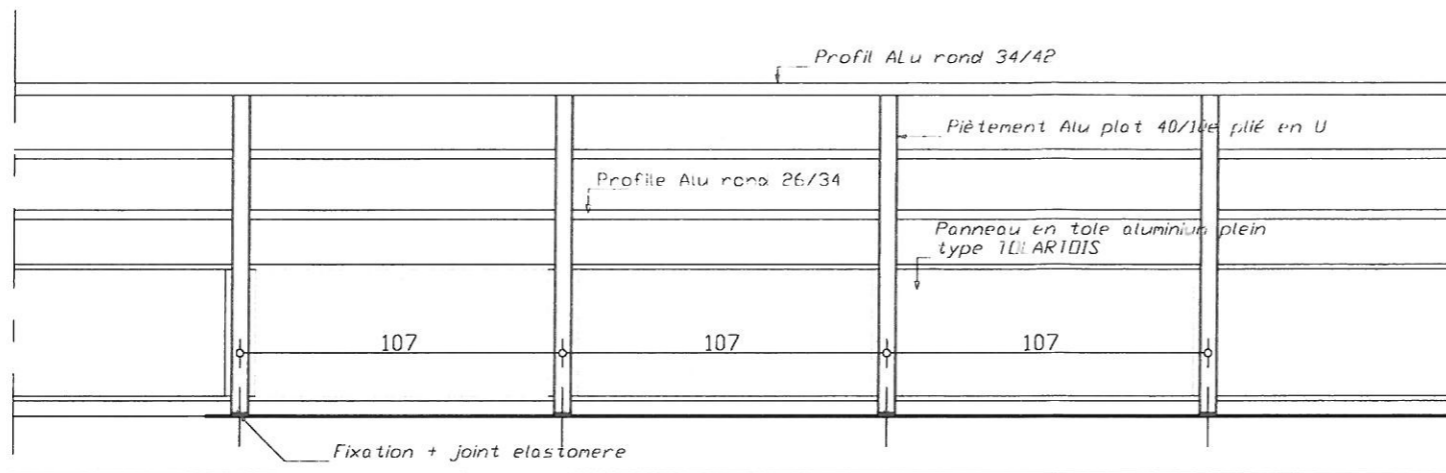
ECH:1/100°



PLAN
EXISTANT

PLAN DE
DEMOLITION

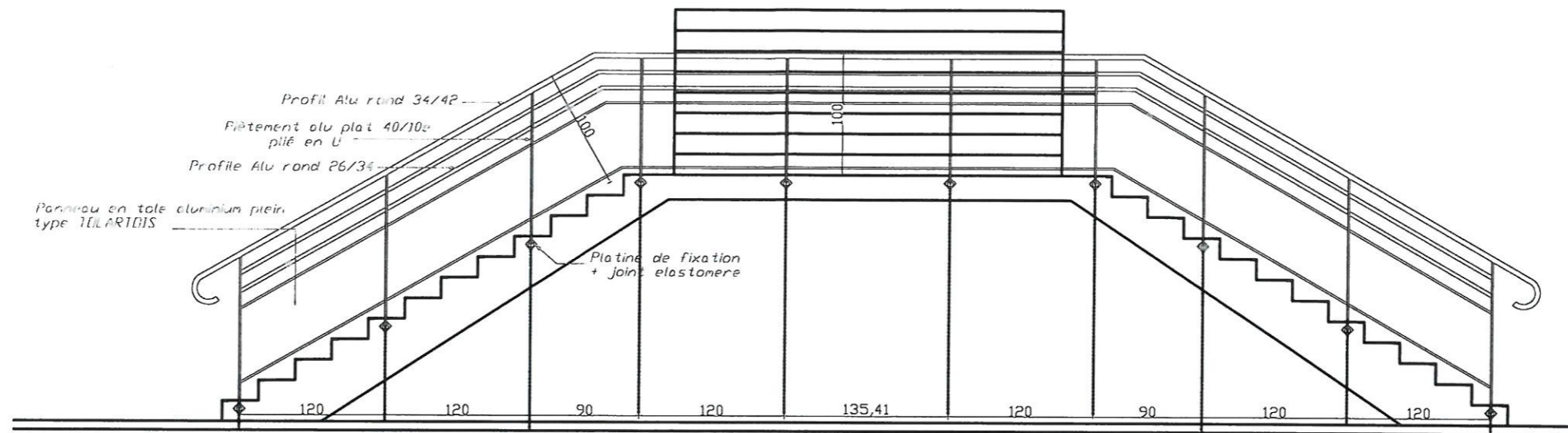
PLAN
D'AMENAGEMENT



GC1 Ech:1/25°

Garde corps Alu

Localisation: Passerelle D'accès



GC2 Ech:1/50^e

Garde corps Alu

Localisation: Bâtiment Internet